



X2O CPU WaterBlock



The X2O CPU water block is sold as a DIY component. You are responsible for correct installation and maintenance of this equipment. XSPC will not be held responsible for any loss of property/data or personal harm caused by the improper use or installation of this equipment. If you are unsure about any part of the installation process please contact XSPC for advice.

Last updated: 21/08/05
For the latest revision of this manual please visit
<http://www.xspc.biz>

Mounting the CPU Water Block (Part 1)

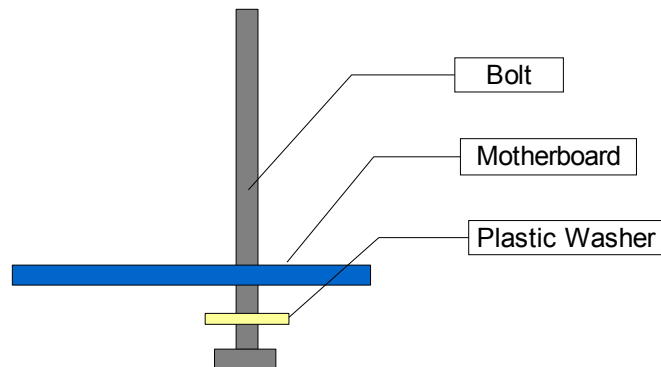
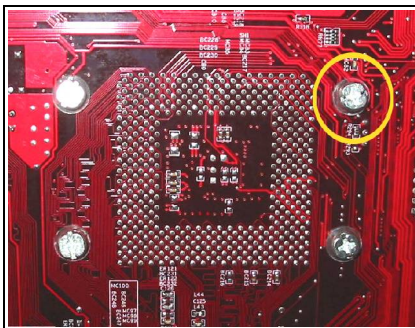
Note: Installation of the mounting bolts may require you to remove the plastic cage around the CPU socket before installation can continue.

Note: The images below show the mount being installed on a Socket 462(A) motherboard but the installation process is the same for all sockets.

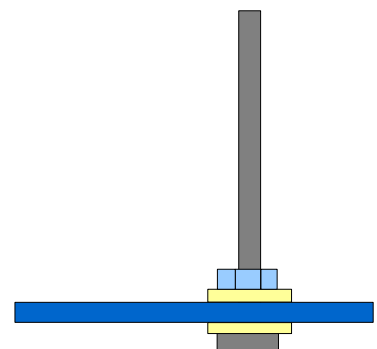
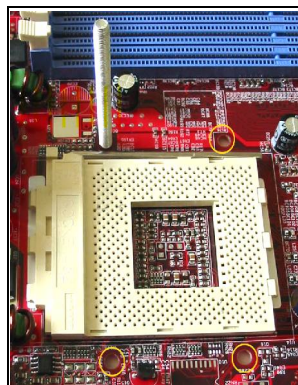
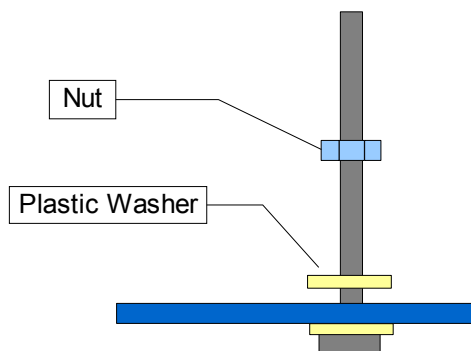


The installation of the CPU water-block is split into 2 parts. In the first part you will install the bolts for the universal mount. Please follow the steps below.

1. Place a plastic washer over the bolt to prevent an electrical short
2. Push the bolt through one of the socket holes around the socket from the back of the board.



3. Turn the board over and place a second plastic washer over the bolt followed by a nut. Then secure the bolt in place by gently tightening the nut.



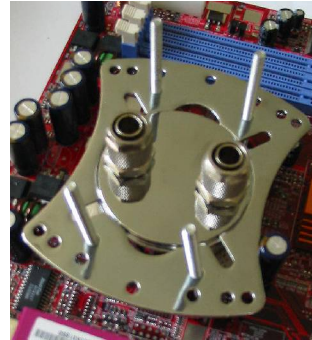
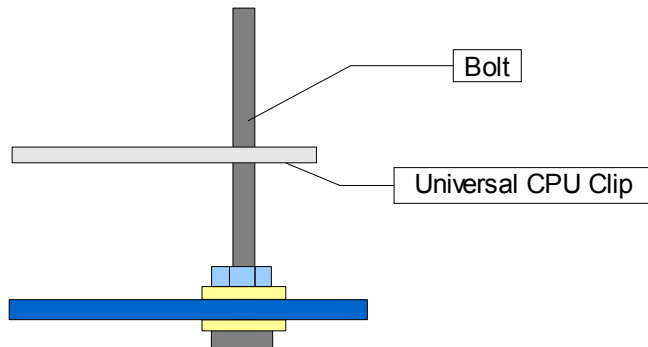
4. Repeat the process for the 4 bolts or two if using an A64 based system
5. Once all bolts are in place the motherboard will be ready to be installed into the PC case.

Installation of the CPU water-block continues. Part 2 of the water-block installation takes place after the tubing has been connected and the system has been filled.

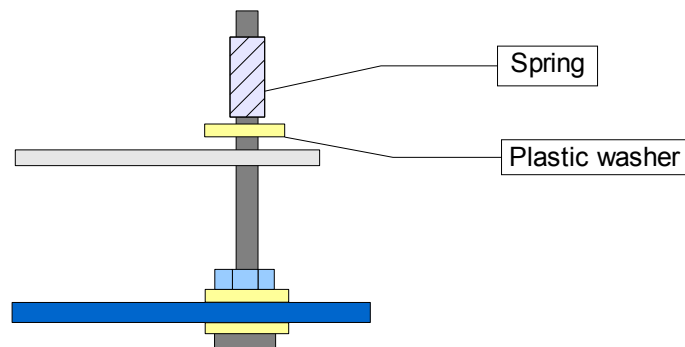
Mounting the CPU Water-Block (Part 2)

Note: The tubing should be connected to the CPU water-block at this stage. The tubing was intentionally left out of the photos on this page so the mounting system is clearly visible.

1. Remove the film from the base of the water-block
2. Apply a thin layer of thermal paste to the CPU or as directed by manufacturer's instructions
3. Place the waterblock over the CPU socket and line up the universal CPU mount with the bolts.
4. Place the CPU water-block onto the CPU and slide the universal mount down into place.

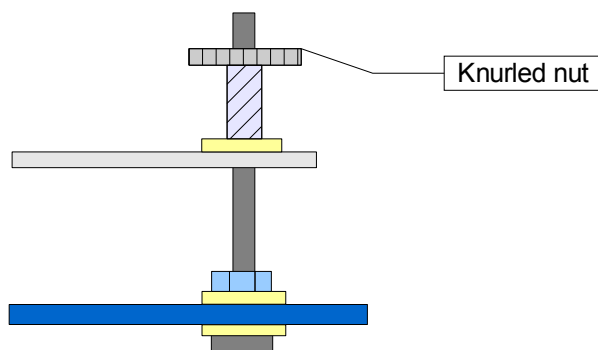


5. Place a plastic washer over each bolt followed by a spring.



6. Place a knurled nut over a bolt and tighten gradually to the required pressure. To avoid applying uneven pressure two opposite knurled nuts should be tightened at once.

Warning: Overtightening may cause damage to your CPU.



Support Contact Information

UK and Mainland Europe

www.xs-pc.co.uk

paul@xspc.biz

North America and Asia

www.xs-pc.co.uk

dazhong@xspc.biz



Copyright© XSPC 2005