

## Technical Details

- Dimensions: 172.5 x 125 x 25.5mm
- Ports: G1/4"

## Box Contents

- 1 x GTX670 Waterblock
- 9 x M3 x 6mm Screws/Washers
- 1 x M3 Nut
- 4 x Blue 1mm Thermal Pad
- 1 x Thermal Paste
- 5 x G1/4" Plugs
- 1 x Twin 3mm Blue LED
- G1/4" fittings sold separately*



**Note:** This waterblock is only suitable for reference design GTX670 cards. If you are unsure if your card is a reference design GTX670 contact us prior to installation to make sure. **Due to the weight of the block we advise caution when moving your PC.**



**1.** The waterblock is designed for SLI setups, so you can fit the G1/4" fittings to multiple sides of the block. Decide which configuration is best for your system.



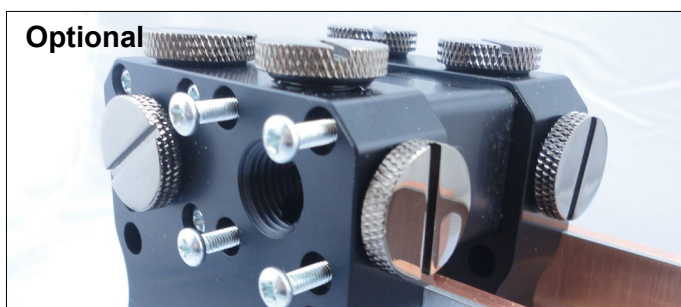
**2.** Use the G1/4" blanking plugs to block the unused ports.



**3.** Attach your chosen fittings to the G1/4" ports. Make sure to attach one of the left and one on the right side. Flow direction is not important.



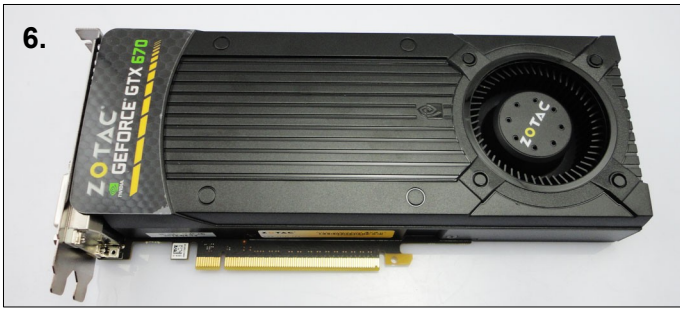
**4.** The block is now ready to be connected to the other watercooling components for leak testing.



**Optional**  
If you are using cards in SLI you can use the optional SLI flow connector to bridge the two cards. This should be done after step 12.

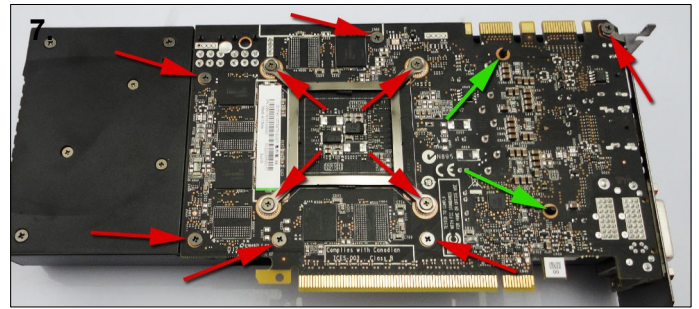
**NEXT PAGE →**

*In the next steps the waterblock is shown without tubing or other watercooling components connected. This has been done to make it easier to see the installation process.*



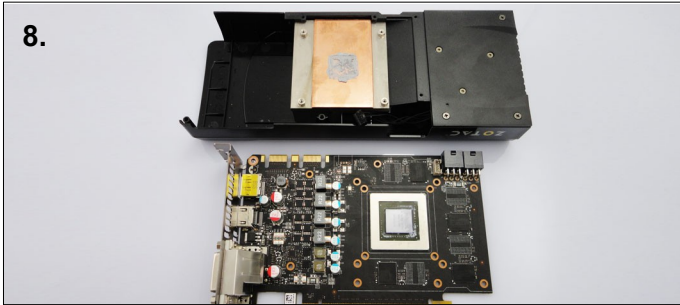
6.

6. Before handing the card you should take precautions to avoid static damage. Remove the GTX670 card from the box ready for installation.



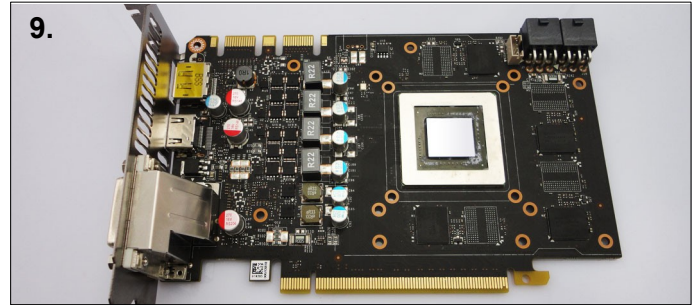
7.

7. Turn the card on its back. Remove the 10 screws highlighted in red, and the two clips highlighted in green.



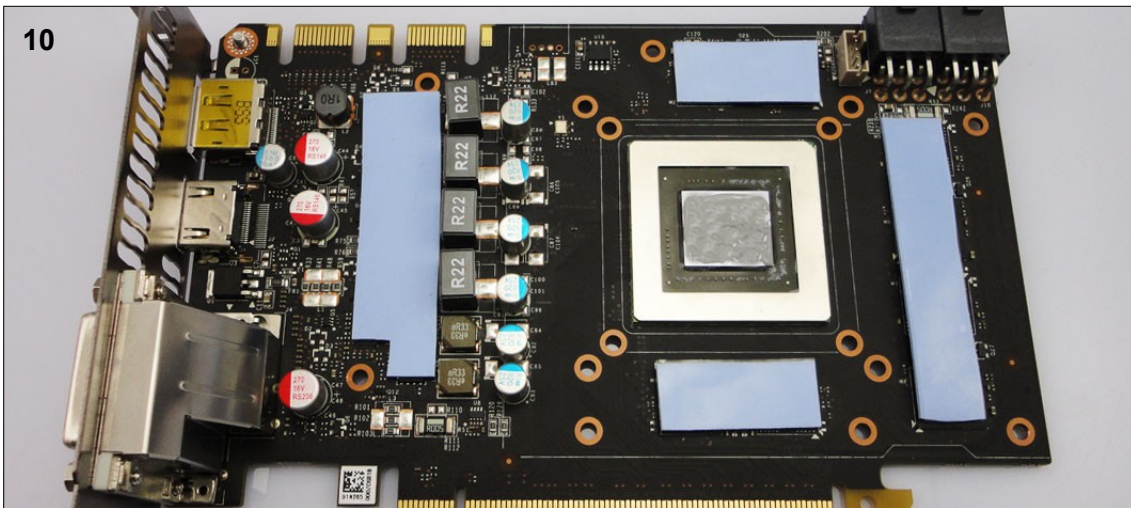
8.

8. Turn the card back over and carefully remove the heatsinks and fan. Now the card and heatsinks are separated, detach the fan power cable from the fan header.



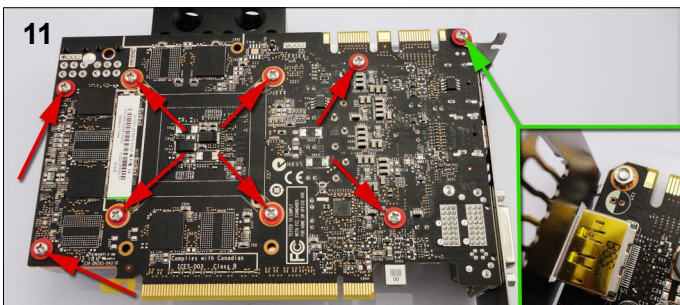
9.

9. Clean the thermal paste from the GPU core, and remove any residue left from the thermal pad.



10

10. Remove the tape from both sides of the thermal pads. Place the four blue pads on the positions shown above. Next apply thermal paste to the GPU core.



11

11. First attach the M3 screw marked in green. You will need to use a nut on the other side of the card. Now carefully place the waterblock onto the card and line up the screw holes. Flip it over, making sure the thermal pads stay in place. Finally attach the block to the card using eight M3 screws and washers. You should start with the four screws behind the GPU.



12

12. Do not over tighten the screws as this may bend the card and cause permanent damage. The card is now ready for use. When you first boot it is advisable to use ATITool or other monitoring software to check the core temperature. If the temperature is high you will need to remount the block.