

Technical Details

- Dimensions: 160 x 120 x 9mm (19mm at ports)
- Ports: G1/4"

Box Contents

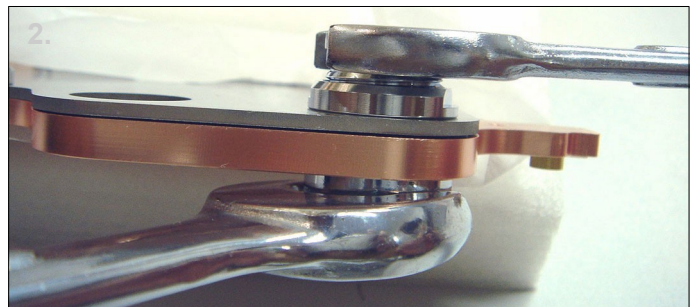
- 1 x 6970 Waterblock
- 9 x M3 x 6mm Screws / Washers
- 5 x Thermal Pads
- 1 x Thermal Paste
- 2 x G1/4" Plugs
- 2 x Rings for long threads(optional)
- G1/4" fittings sold separately*



Note: This waterblock is only suitable for reference design 6970 cards. If you are unsure if your card is a reference design 6970 contact us prior to installation to make sure.



1. The waterblock is designed for crossfire setups so you can fit the G1/4" fittings to either side of the block. Decide which configuration is best for your system.



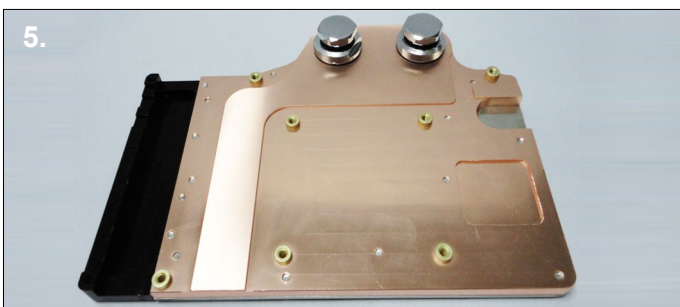
2. IMPORTANT: When you install the G1/4" fittings or plugs in steps 2,3 you will need a second wrench on the reverse side of the bulkhead fitting to make sure it doesn't unscrew.



3. Use the provided plugs to block the unused G1/4" ports. Make sure the o-rings are fully compressed.



4. If you are using G1/4" barbs/fittings with a long thread you will need to use the supplied rings to avoid blocking the flow. Attach the barbs to your chosen ports using an adjustable spanner. Make sure the o-rings are fully compressed.



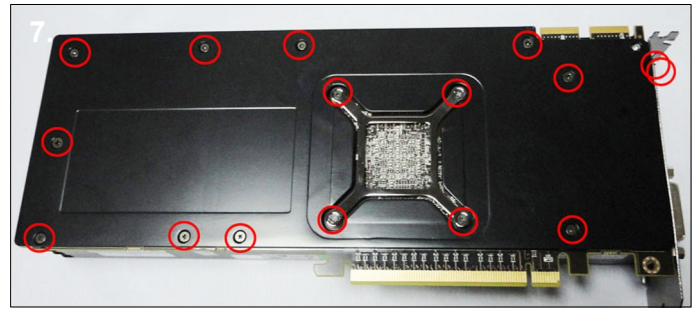
5. The block is now ready to be connected to the other watercooling components for leak testing.

NEXT PAGE →

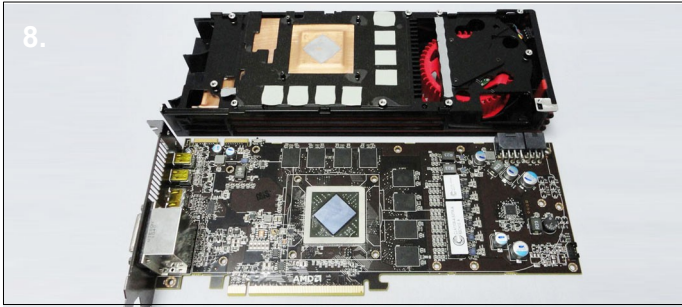
In the next steps the waterblock is shown without tubing or other watercooling components connected. This has been done to make it easier to see the installation process.



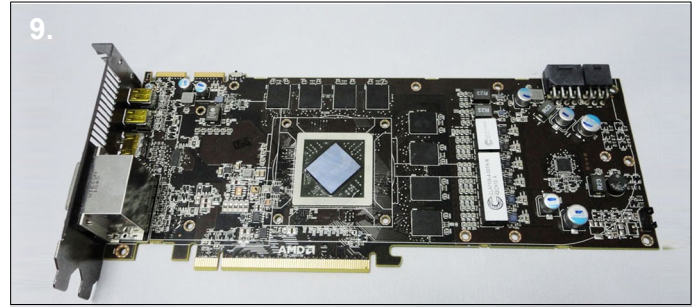
6. Before handing the card you should take precautions to avoid static damage. Remove the 6970 card from the box ready for installation.



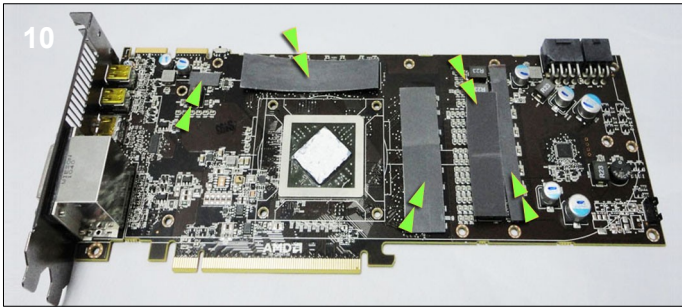
7. Remove the two screws on the bracket next to the DVI ports. Now turn the card on its back and remove the 14 screws highlighted above.



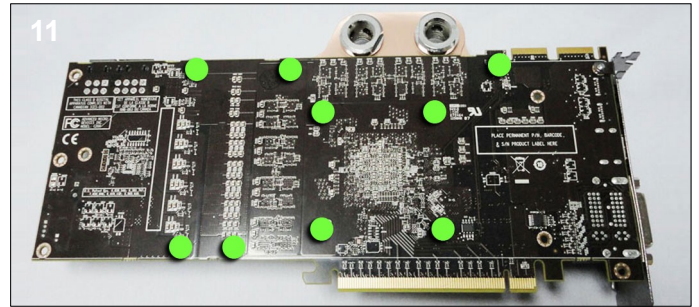
8. Turn the card back over and carefully remove the heatsink and fan. Now the card and heatsink are separated detach the fan power cable from the fan header.



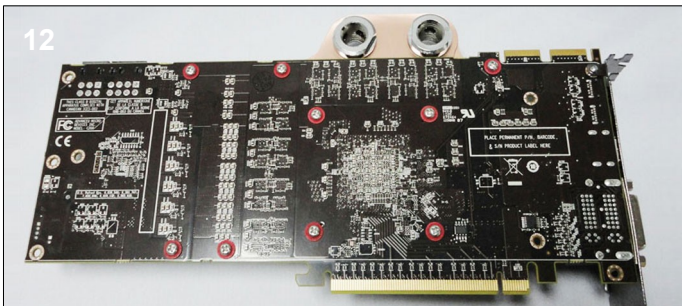
9. Clean the thermal paste from the GPU core ready for installation. Remove any residue left from the thermal pads.



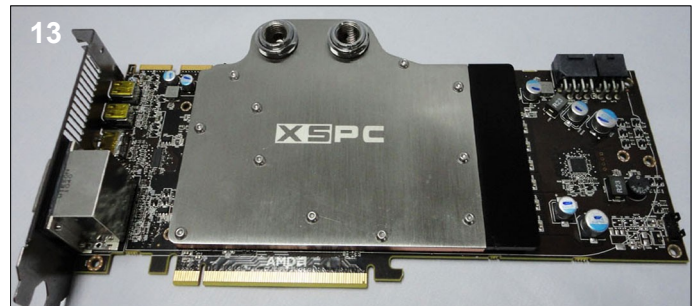
10. Remove the tape from both sides of the thermal pads and place the thermal pads in the five locations highlighted above. Now apply thermal paste to the GPU core.



11. With the copper side of the waterblock facing up, place the card over the block and line up the screw holes. Make sure the thermal pads stay in place.



12. Finally use the 9 provided screws and washers to attach the waterblock to the card. It's best to start with the four screws around the GPU to apply the correct pressure to the core, followed by the five outer screws. Do not over tighten the screws as this may bend the card and cause permanent damage.



13. The card is now ready for use. When you first boot it is advisable to use ATITool, GPU-Z or other software to check the core temperature. If the temperature is high you will need to remount the block.