

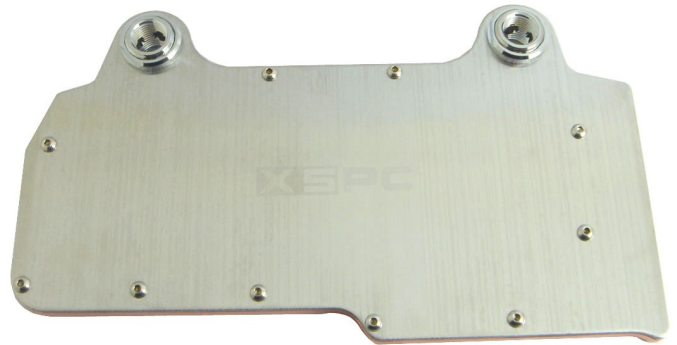
Technical Details

- Dimensions: 210 x 124 x 9mm (19mm at ports)
- Ports: G1/4"

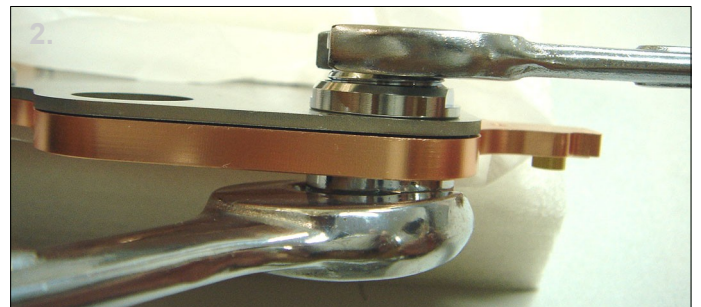
Box Contents

- 1 x 5970 Waterblock
- 8 x M3 x 6mm Screws / Washers
- 5 x M3 x 10mm Screws / Washers
- 10 x Thermal Pads (3 Blue, 7 Black)
- 1 x Thermal Paste
- 2 x G1/4" Plugs
- 2 x Rings for long threads(optional)
- G1/4" fittings sold separately*

Note: This waterblock is only suitable for reference design 5970 cards. If you are unsure if your card is a reference design 5970 contact us prior to installation to make sure.



1. The waterblock is designed for crossfire setups so you can fit the G1/4" fittings to either side of the block. Decide which configuration is best for your system.



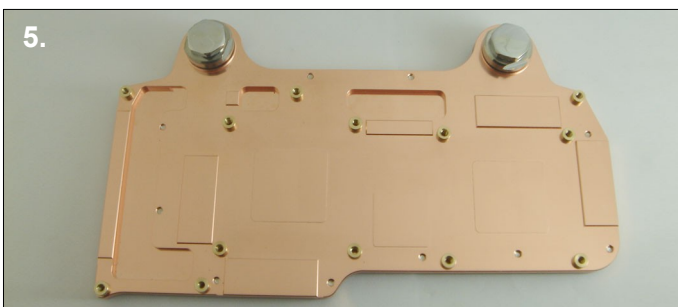
2. **IMPORTANT:** When you install the G1/4" fittings or plugs in steps 2,3 you will need a second wrench on the reverse side of the bulkhead fitting to make sure it doesn't unscrew.



3. Use the provided plugs to block the unused G1/4" ports. Make sure the o-rings are fully compressed.



4. If you are using G1/4" barbs/fittings with a long thread you will need to use the supplied rings to avoid blocking the flow. Attach the barbs to your chosen ports using an adjustable spanner. Make sure the o-rings are fully compressed.



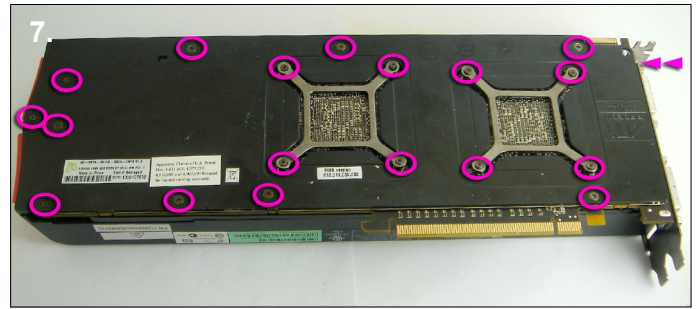
5. The block is now ready to be connected to the other watercooling components for leak testing.

NEXT PAGE →

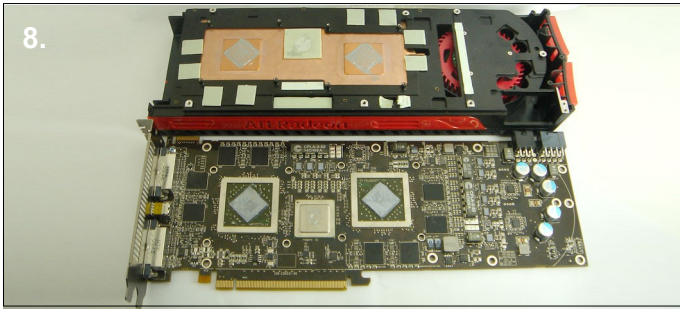
In the next steps the waterblock is shown without tubing or other watercooling components connected. This has been done to make it easier to see the installation process.



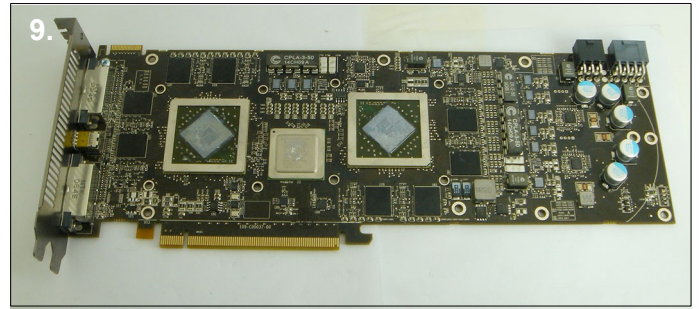
6. Before handing the card you should take precautions to avoid static damage. Remove the 5970 card from the box ready for installation.



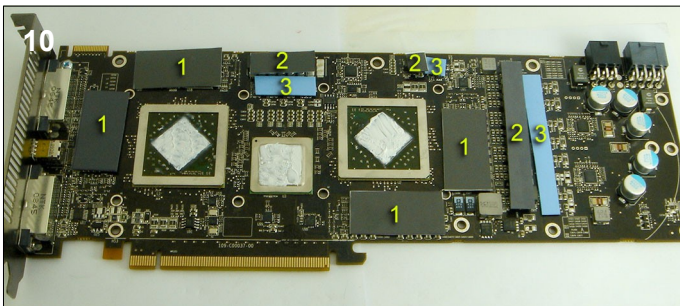
7. Remove the two screws on the bracket next to the DVI ports. Now turn the card on its back and remove the 18 screws highlighted above.



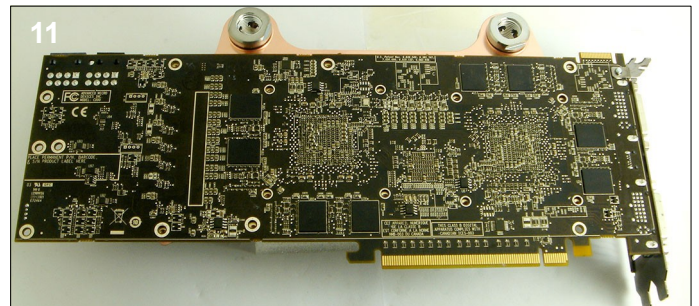
8. Turn the card back over and carefully remove the heatsink and fan. Now the card and heatsink are separated detach the fan power cable from the fan header.



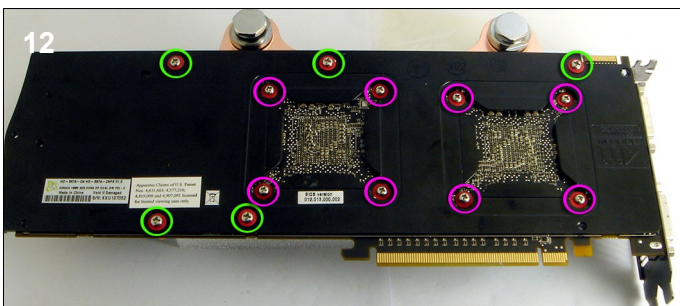
9. Clean the thermal paste from the GPU cores ready for installation. Remove any residue left from the thermal pads.



10. Remove the tape from both sides of the thermal pads. Place 4 black pads on the memory location marked 1 and place the other 3 black pads on the locations marked 2. Now place the thicker blue pads on the locations marked 3 it is important not to mix-up the blue and black pads. Next apply thermal paste to the chipset and the GPU cores.



11. With the copper side of the waterblock facing up place the card over the block and line up the screw holes. Now fit the original backplate, again checking that the holes line up. Make sure the thermal pads stay in place.



12. Finally use the 13 provided screws and washers to attach the waterblock to the card. It's best to start with the 8x 6mm screws highlighted in purple to apply the correct pressure to the cores. Followed by the 5x 10mm screws highlighted in green. Do not over tighten the screws as this may bend the card and cause permanent damage.



13. The card is now ready for use. When you first boot it is advisable to use ATITool or other software to check the core temperature. If the temperature is high you will need to remount the block.