

Technical Details

- Dimensions: 149 x 159 x 86mm
- Capacity: 1350ml
- Ports: G1/4"
- Mounts: 3x 5mm LED

Box Contents

- 1x Acrylic Bay Reservoir
- 1x 5mm Blue LED
- 4x Screws

G1/4" fittings sold separately



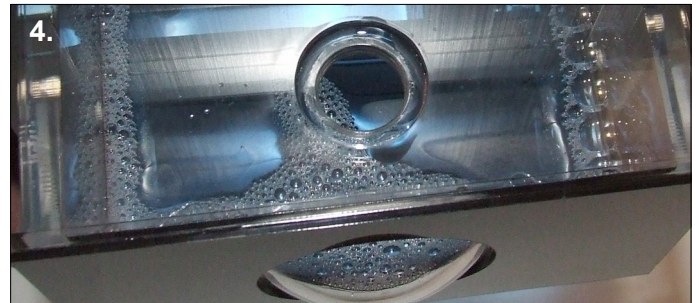
1. Screw the G1/4" fittings to the inlet and outlet making sure the o-rings are compressed. 1/2" barbs are used in the photo but you can use any type of G1/4" fitting.



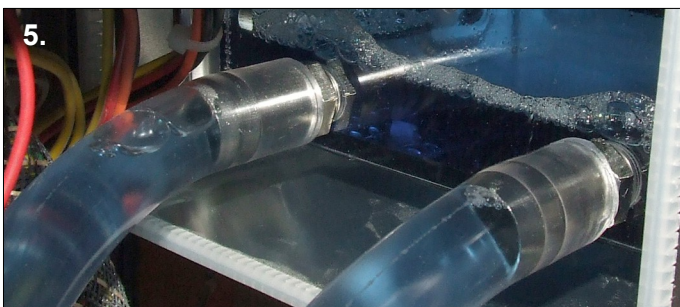
2. The reservoir should be connected to the pump, water-blocks and radiator in a loop. When you connect the tubing it is important that the reservoir outlet is connected to the pumps inlet.



3. When you are happy that all the components in the loop are securely connected, remove the filler cap by using a small coin and turning anti-clockwise.



4. Start to fill the reservoir, it may help to use a funnel to avoid spillage. Keep filling the reservoir until the liquid stops draining into the tubing.



5. Turn on the pump and as the reservoir drains top up the water level. Leave the pump running to remove all the air from the system. When all the air has been removed replace the filler cap and turn it clockwise to seal the reservoir.



6. Push in the reservoir flush with the front of the PC case and use the 4 provided screws to fix it securely in place.

Warning: Do not clean with alcohol