

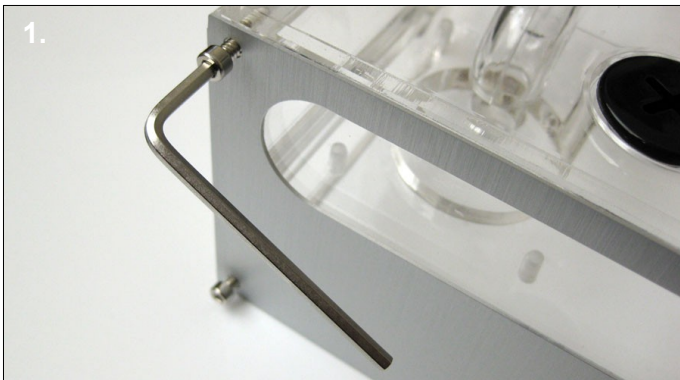
Technical Details

- Dimensions: 149 x 104 x 85.5mm
- Ports: G1/4"
- LED Mounts: 3 x 5mm

Box Contents

- 1x Bay Reservoir for Laing DDC
- 8x M4 Screws
- 1x Allen Key
- 2x Aluminium Face Plates
- 4x Drive Bay Screws
- 1x 5mm Blue LED

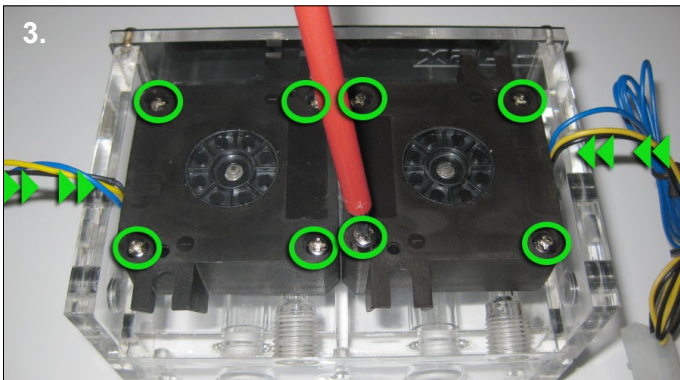
G1/4" fittings sold separately



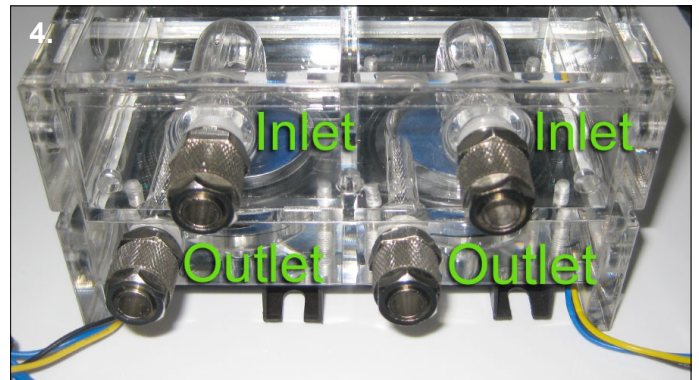
1. Unscrew the 4 screws on the front of the reservoir using the provided allen key. Now place your chosen faceplate on the reservoir and refit the screws.



2. Remove the original top from two the DDC pumps by unscrewing the four screws on the base of the pump. Place the o-ring back onto each of the pumps.



3. Place the pumps onto the reservoir making sure that the o-rings stay in place. The pumps should be orientated so the wires are on the outer sides of the reservoir. Use the 8 long M4 screws to attach each pump to the reservoir, tightening them until the large o-ring is compressed.



4. Now screw the G1/4" fittings to the inlets and outlets making sure the o-rings are compressed. Push the LED or LED's into any of the three 5mm holes on the back of the reservoir. The pump is now ready to be connected to your other watercooling components and leak tested before being fitted into two 5.25" drive bays.

Filling and removing air

The filler cap can easily be removed by using a small coin and turning anti-clockwise. The reservoir should be filled before the pump is started to avoid damage. When filling the system it can help to tilt the reservoir backwards slightly, while the pump is running to remove air bubbles. The pump may make some noise until all the air has been removed.

Warning: Do not clean with alcohol